



375 E. COMSTOCK, CHANDLER AZ
PHONE (480) 838-5329

SAFE-T-SHORE
SPLICE PLATES INSTALLATION/TABULATED DATA

MODEL DESIGN-A-SHIELD SPLICE PLATE FOR 2-SIDED BOX

REFERENCE TO OCCUPATIONAL SAFETY AND HEALTH ADMINISTRATION RULES AND REGULATIONS, 29 CFR, NO. 209, PART 1926, SUBPART P

PANEL MODEL HtxLg/FT	SPliced PANELS			DEPTH RATING (ft) (see exceptions)	
	WEIGHT (in LBS.)	HEIGHT (ft)	LENGTH (ft)	(C-60)	(B-45)
28 BBP	100	2	8	40	53
2-2x8 BBP's	200	2	16	8	11
2-2x4 BBP's (ENDS) 1-2x12 BBP (MIDDLE)	250	2	20	6	7.5

PARTS LIST						
COMBINED PANEL HEIGHT & PLATE LENGTH TYP.		2'	4'	6'	8'	
SPLICE PLATES (2-PER SPLICE)		580042	580043	580044	580045	
Ø3/4" x 5 1/2" HEX HEAD BOLT		541930	12	24	36	48
Ø3/4" FLAT WASHERS		541931	12	24	36	48
Ø3/4" LOCK WASHERS		541932	12	24	36	48
Ø3/4" HEX NUTS		541933	12	24	36	48

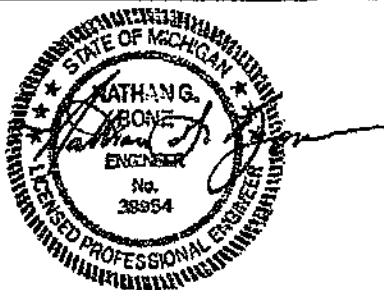
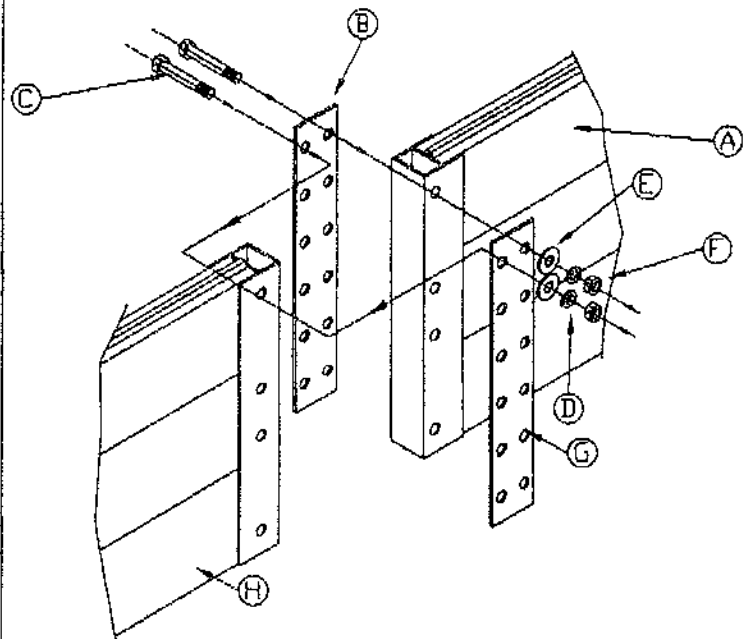
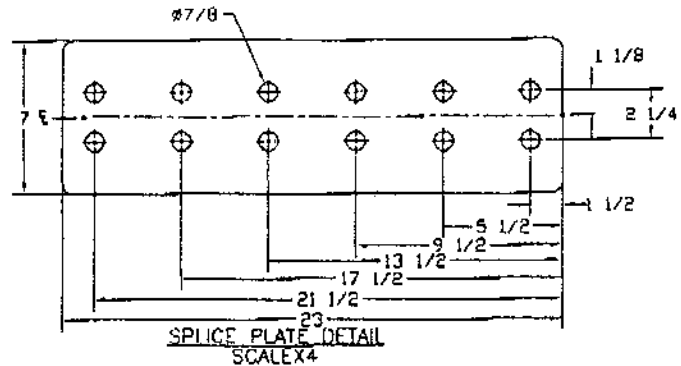
- Notes:
1) Splice Plates made from 1/4" thick steel (55 k.s.i. min yield)
2) All hardware to be grade 5 or equivalent

Exceptions:
Full length Build-A-Box Corner Posts are required.
Above depth ratings assume end panel reaction from a 2x16 BBP.
Refer to Efficiency's Build-A-Box Tab Data for soil types.
Avoid excessive handling loads
All 2' Build-A-Box Panels shall be seated between adjacent units so as to offer good load transfer.
Do not overdig by more than 4" at walls.

INSTALLATION & TABULATED DATA

NOTES:

- REMOVE PANEL (A) FROM TRENCH APPLICATION. REMOVE ANY FOREIGN MATERIALS FROM ENDS OF CHANNEL (IE. MUD, DIRT)
- PLACE SPLICE PLATES (B) ON OPPOSITE SIDES OF PANEL (A) MATCH HOLES OF THE SPLICE PLATES (B) & PANEL (A) TOGETHER
- ASSEMBLE FIRST SIDE OF SPLICE PLATE (B). PLACE BOLTS (C) THRU SPLICE PLATE (B) & PANEL (A) IN ALL 4 LOCATIONS. NEXT ADD LOCK WASHER (D) & FLAT WASHER (E). ADD HEX NUT (F) AND THREAD BY HAND UNTIL TIGHT
- THIS COMPLETES ONE SIDE OF SPLICE PLATE (B) ASSEMBLY.
- NEXT PLACE OPPOSITE PANEL (H) IN SPLICE PLATE (B) ASSEMBLY AND REPEAT STEP "3" TO COMPLETE SPLICE PLATE (B) ASSEMBLY TIGHTEN BOTH UNITS TO SECURE PANELS.
- USE SPLICE PLATES (B) AS A GUIDE TO DRILL HOLES (G) IN PANEL WHERE THEY DO NOT EXIST DRILL A 13/16" HOLE THRU BOTH PANELS (1-PLACES)
- ADD REMAINING HARDWARE AS STATED IN STEP "3" TIGHTEN ALL BOLTS TO 140 FT-LBS



CERTIFIED BY:
EFFICIENCY PRODUCTION INC
JAN. 5, 2005

REF DWG # SPLICE PLATE TAB

USE THIS PRODUCT ONLY IN ACCORDANCE WITH APPLICABLE FEDERAL, STATE, OR LOCAL LAWS

ANY USE OF THIS PRODUCT NOT SPECIFICALLY DESCRIBED ON THIS CERTIFICATE COULD CAUSE CAVE-IN, COLLAPSE, OR STRUCTURAL FAILURE RESULTING IN DEATH OR SERIOUS INJURY